



## **LILLE VEGA**

### **Venue Specifications**

Version 25.04, Valid from April 2025

#### **CONTACT:**

Phone: +45 3326 0948

All advance communication via:

[yourshow@vega.dk](mailto:yourshow@vega.dk)

**VEGA - Musikkens Hus, Enghavevej 40,**

**DK-1674 København V, Denmark**

---

#### **VEGA TEAM:**

##### **HEAD OF PRODUCTION**

Kevin Le Geyt

##### **SENIOR PLANNING & PROJECT MANAGER**

Tobias Smith Agger

##### **PLANNING & PROJECT COORDINATOR**

Molly Marlow

##### **EVENT MANAGER**

Kenneth Hallengren



## TABLE OF CONTENTS

**Page 3:** Welcome

**Page 4:** General information

**Page 7:** Photography & video recordings

**Page 8:** Technical specifications – Sound

**Page 9:** Technical specifications – Guest connections

**Page 10:** In House audio equipment

**Page 11:** Technical specifications – In House Rentals

**Page 13:** Technical specifications - Laser

**Page 14:** Technical specifications – Stage & Light

**Page 19:** Map



## Welcome

**Someday soon, you will be playing at VEGA.**

You will be playing the small stage at VEGA called "Lille VEGA". The venue has an audience capacity of 450 + 50 complimentary tickets. Your guest list capacity is outlined in the deal. By default, we have a fixed number of 10 spots per band and 5 per support act.

The venue is situated at the centre of the city and you will be close to pretty much anything you might require.

We hope that you will take the time to read the following pages, as they should provide you with answers to the most common questions prior to your concert here at VEGA. Should any questions remain after reading this document, please do not hesitate to call or e-mail us.

Upon your arrival you will be greeted by our venue manager, who will ensure that you are well settled in the backstage area and that everything is according to our agreements. The venue manager will be your main contact all day.

We look forward to having you here and hope you will have a pleasant stay in Copenhagen.



## GENERAL INFORMATION

### **Parking:**

When you arrive, please park at "Rejsbygade". The venue manager will meet you there at the agreed get-in time.

After load in the venue manager will advise on where to park.

If you travel by nightliner and / or truck, please advise.

**NB:** *National law prohibits engines running idle for more than 1 minute in populated areas.*

### **Load in:**

Load in from "ENGHAVEVEJ 40" Load in: 20 meter push (inside the building) to elevator, max 1000 kg (w/1,3m - h/2,2m - d/2,7m), directly to stage floor.

### **Entrance (crew and artists):**

The load in is through the black folding gate at Enghavevej. Please wait by the door when you arrive. The Venue Manager of the day will meet you there at the agreed get-in time.

### **Production office:**

Below stage next to dressing rooms

### **Venue Crew:**

1 x Venue Manager (dealing with buy outs, catering, agreements and will be your main contact of the day.)

1 x Sound engineer

1 x Stagehand / loader (doubles as LD and will as a minimum: focus and turn on stage lights)

### **Hotel:**

We work with Scandic Hotels.

<https://www.scandichotels.dk/>

We will help you with booking if needed.

### **Guest list:**

Your guest list capacity is outlined in the deal. By default we have a fixed number of 10 spots for the main act, 10 spots for the agency and 5 spots for support.



## GENERAL INFORMATION

### **Dressing rooms:**

Two rooms (one for support if any – separated by doors from the main room)  
One shower and one toilet.

All rooms are below stage.

### **Wifi:**

Free WLAN internet access is available in the building. Please select the network with SSID = VEGA\_Artist. Code will be handed out to you upon arrival.

### **Merchandise:**

We do not charge a fee and you are allowed to sell your own merchandise.

We can provide tables and lights.

We do not provide a merchandise seller.

If you need someone to sell your merch we point you to

[kaylee@happyduck.dk](mailto:kaylee@happyduck.dk). Kaylee is not affiliated with VEGA, and all agreements are made directly with her.

### **Curfew:**

Our standard backstage curfew for shows with doors at 19.00 is 00.00.



## GENERAL INFORMATION

### **dB limits:**

To ensure a healthy concert experience to our audience, and to comply with EU noise regulations towards our employees, we are enforcing a dB limit of 103 dB(A) averaged over 15 minutes ( $L_{Aeq\ 15} = 103\text{ dB(A)}$ ) – measured at FOH.

A properly calibrated measurement system will be available to the sound engineer (see [www.10EaZy.com](http://www.10EaZy.com) for information about the system) VEGA doesn't use a peak limiter or circuit breaker to enforce the rule.

### **Fire – Pyro – Confetti – Co2:**

Please note that the use of open fire, pyrotechnics confetti and CO2 are not allowed at VEGA. Confetti and CO2 canons are under the same restrictions. The building is national heritage and the risk of damaging the interior prohibits the use of gas driven effects.

### **Smoking:**

PLEASE NOTE: National law prohibits smoking in public areas, including but not limited to performance and backstage facilities. Smoking is allowed outside the venue. We kindly ask you to respect this rule, as we did not invent it nor do we want to spend all day acting as bad cops.



## **PHOTOGRAPHY AND VIDEO RECORDINGS**

VIDEO AND PHOTOGRAPHY RECORDINGS – in any form – require that you read and respect the following guidelines:

Video cameras can be placed at the back of the hall by the mixing console. This should be done in cooperation with VEGA's sound technician

Filming is possible from the balcony, sides, and back of concert room, and from the mixing console. It is also possible to film from certain points on stage to a limited extent – this should be coordinated and cleared with the VEGA staff

Emergency exits must be respected. No cameras in front of emergency exits

Filming or taking photos of VEGA's service and security staff is not allowed

Filming or taking photos of the bar areas is not allowed

Filming or taking photos in and around the building (stairs, corridors, toilets, hall, entrance etc.) can only happen if this has been cleared with VEGA

Filming or taking photos with artificial light attached to the camera is not allowed unless this has been cleared with VEGA before show

It is not possible to have a podium or any form of elevation for a stationary camera in the audience area

VEGA's sound technician can provide an audio drop for your camera from the mixing console – this must be arranged at least three days ahead of the show (as stated in the contract) and cannot be expected to happen a few minutes before show

Video recordings and photos from VEGA cannot be used in commercial context with a third part involved without VEGAs permission. VEGA operates as a brand itself and is protected by copyrights. A contract will have to be negotiated and signed.



## **TECHNICAL SPECIFICATIONS SOUND**

### **PA-System**

4x d&b V7-P

5x d&b V-GSUB – array

2x d&b S8 – (innerfill)

Powered by d&b D80 / D20 amps

### **FOH:**

Soundcraft Vi2000 digital console

Soundcraft Vi Stage box 48/16 connected via MADI

### **Monitor (mixed from FOH)**

6 x L'Acoustics HiQ

10 x sends on LA8 amps



## IN HOUSE AUDIO EQUIPMENT

### **Microphones:**

1x Sennheiser 902  
2x Sennheiser 945  
6x Sennheiser 904  
1x Sennheiser 905  
2x Sennheiser 906  
1x Sennheiser 602 Mk2  
6x Sennheiser 614  
1x Sennheiser 421  
1x Sennheiser 935  
1x Sennheiser 901  
1x Shure B52A  
1x Shure B91A  
6x Shure SM 57  
1x Shure B57A  
2x Shure SM 58  
4x Shure B58A

### **DI's:**

5x BSS DI  
4x Radial D2

### **DJ equipment:**

2x CDJ-3000  
1x DJM-A9  
1x XDJ-XZ  
1x DJM-S9



## TECHNICAL SPECIFICATIONS GUEST CONNECTIONS

We offer 14 CAT6A connections for audio: 4 between FOH – Downstage left and 4 between FOH – Patch Stage Right. And 4 for light, FOH – Upstage Right.

All cables were installed and tested in June 2024 with Lantek 2 -500.

Test name	Length (m)	NEXT Margin (dB)	Cable type	Test standard
SV-US-SL 1	25,00	2,3	Cat 6a STP Perm	TIA 568-C.2
SV-US-SL 2	25,00	1,9	Cat 6a STP Perm	TIA 568-C.2
SV-US-SL 3	25,10	2,2	Cat 6a STP Perm	TIA 568-C.2
SV-US-SL 4	25,00	2,3	Cat 6a STP Perm	TIA 568-C.2
SV-RACK-SR 1	24,60	2,7	Cat 6a STP Perm	TIA 568-C.2
SV-RACK-SR 2	24,60	2,7	Cat 6a STP Perm	TIA 568-C.2
SV-RACK-SR 3	24,60	2,5	Cat 6a STP Perm	TIA 568-C.2
SV-RACK-SR 4	24,60	3	Cat 6a STP Perm	TIA 568-C.2
SV-US-SR 1	33,80	3	Cat 6a STP Perm	TIA 568-C.2
SV-US-SR 2	33,80	3,3	Cat 6a STP Perm	TIA 568-C.2
SV-US-SR 3	33,80	3,5	Cat 6a STP Perm	TIA 568-C.2
SV-US-SR 4	33,80	2,8	Cat 6a STP Perm	TIA 568-C.2

Full report can be sent by request



## **TECHNICAL SPECIFICATIONS IN HOUSE RENTALS**

### **Backline:**

#### **Drums**

Yamaha Oak Custom

Snare, 10" 12", 14", 16" 24"

We also have vintage yellow Sonor Percussion.  
10", 12", 15" 23"

Cymbals: Zildjian K Series

Custom Dark hi hat 14" , Custom Dark crash 18"

Custom Dark ride 20", Custom Dark crash 16"

All stands.

**140 Euro pr show**

#### **Bass amp**

TC Electronic RH750 Amp

2 x TC Electronic RS 210 Bass Cabinet.

**70 Euro pr show**

#### **Guitar amp**

1 x Fender Twin

1 x AC30

**70 Euro pr show**

#### **Miscellaneous**

We have many keyboardstands + guitar stands.

1 x Spd-s Stand and mounting plate

1 x Focusrite Scarlett 18i20 3rd Gen Soundcard



## TECHNICAL SPECIFICATIONS IN HOUSE RENTALS

### Audio:

2 x wireless microphones. Shure AD4D / Beta58

**40 Euro pr channel pr show**

1 x Midas M32

1 x Midas DM16

1 x Midas Venice 240

**70 Euro pr show**

2 x d&b C4

4 x d&b C7

2 x D-PAC AS-2

**Ask for quote**

### Lights:

4 pcs Acme CM-350ZII, Led RGBW wash zoom moving heads, 7x30w.  
No brackets, floor lights.

**200 Euro pr show**

8 pcs Acme MP-300Z, Led RGBW zoom par, 19x10w. No brackets,  
floor lights.

**200 Euro pr show**

4 pcs SGM X-5 strobes. No brackets, floor lights.

**100 Euro pr show**

Please note that we do not offer a backline/light technician to set up or take down backline/lights when renting our in-house backline/lights. This will be at your own responsibility.



## LASER USE

Laser is also only allowed with prior agreements – and relevant permits.

When use of lasers in shows the following must be obtained:

On laser class classified upon class 3R(<5mW), As 3B(<500mW) and 4(>500mW) should there not be "Scanned" in audience area.

Beams must be terminated on safe none reflected surface that is untreatable for audience.

If the idea is to project in audience area – a calculation will have to show – that the wanted laser do not exceed the agreed limit values.

MPE values is locked as ANSI Z136 and IEC 60825

As guideline the value is 2.5mW/cm<sup>2</sup> for static beams and 10mW/cm<sup>2</sup> for scanned beams

This must be obtained by using special designed laser power measuring instrument.

Upon agreement the show will run after "ilda level 2/10" as long the shows respect and can document you are following safety guidelines:

[https://www.ilda.com/resources/Safety/audience-scanning\\_overview\\_latest.pdf](https://www.ilda.com/resources/Safety/audience-scanning_overview_latest.pdf)

**Imagolux** is VEGA Contractor – and will assist during advance when laser is used at the venue.

If it is needed to have **Imagolux** present during show – the invoice for this support will be directed to promoter/show producer.



## TECHNICAL SPECIFICATIONS STAGING & LIGHT

**Stage:**

Depth: 5,5m

Width: 7,0m

Height: 0,8m

Clearance: 3,2m

A mojo barrier is available upon request.

**Backdrop:**

Grey Molton

**Front curtain:**

Black Molton

**Console:** Chamsys MQ50

**Smoke:** Smoke factory Hazer

**Aux power:**

Sound: one 3 x 63 amp + two 3 x 16 amp

Light: one 3 x 63 amp + two 3 x 32 amp + one 3 x 16 amp

All in 3 phase CEE form

**Projector and screen:**

We offer a projector and screen in Lille Vega. It can be reached via HDMI from Stage Right and FOH.

The screen size is 533 x 300cm and fills the backwall.

1 x Panasonic PT-RZ690, 6000 ANSI lumens projector

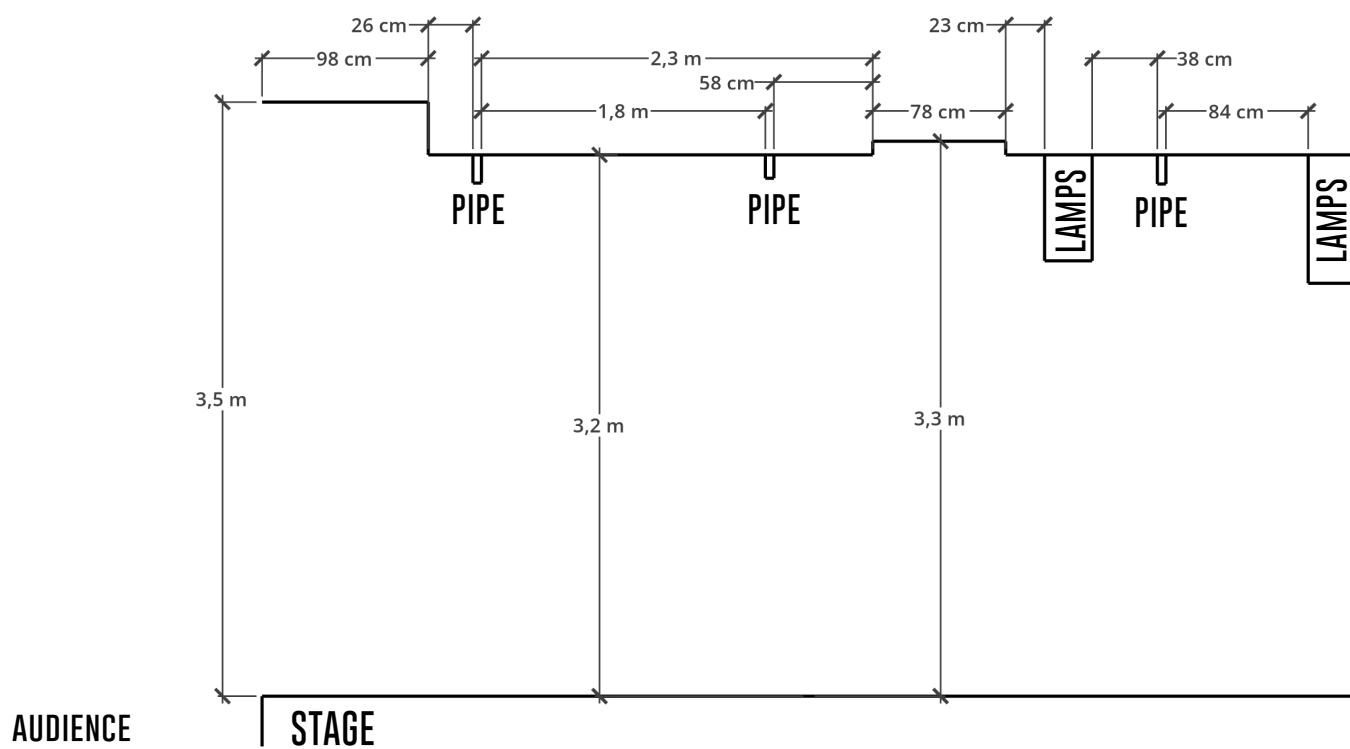
System consists of a BlackMagic monitor Stage Right. Black Magic Atem mini ISO switcher and monitor at FOH.

HDMI connection can be made on stage or at FOH. All inputs are HDMI 1920x1080 HD

We also have a simple Chamsys MagicHD media server connected to the system. Simple generic graphics can be reached easily from our Chamsys console.



## TECHNICAL SPECIFICATIONS STAGING & LIGHT



View from stage left towards stage right



## TECHNICAL SPECIFICATIONS STAGING & LIGHT

### **Projector:**

Panasonic PT-RZ690

Can be controlled from FOH, or side of the stage.

### **Screens:**

Big backdrop screen (mounted at the back of the stage):

Front projection

Format: 16:9

Size: 533 cm x 300 cm

Smaller screen:

Front projection

Format: 16:9

Dimensions: 310 cm x 180 cm (note: 5 cm black borders on all sides)

Picture size: 300 cm x 170 cm

### **Blackmagic:**

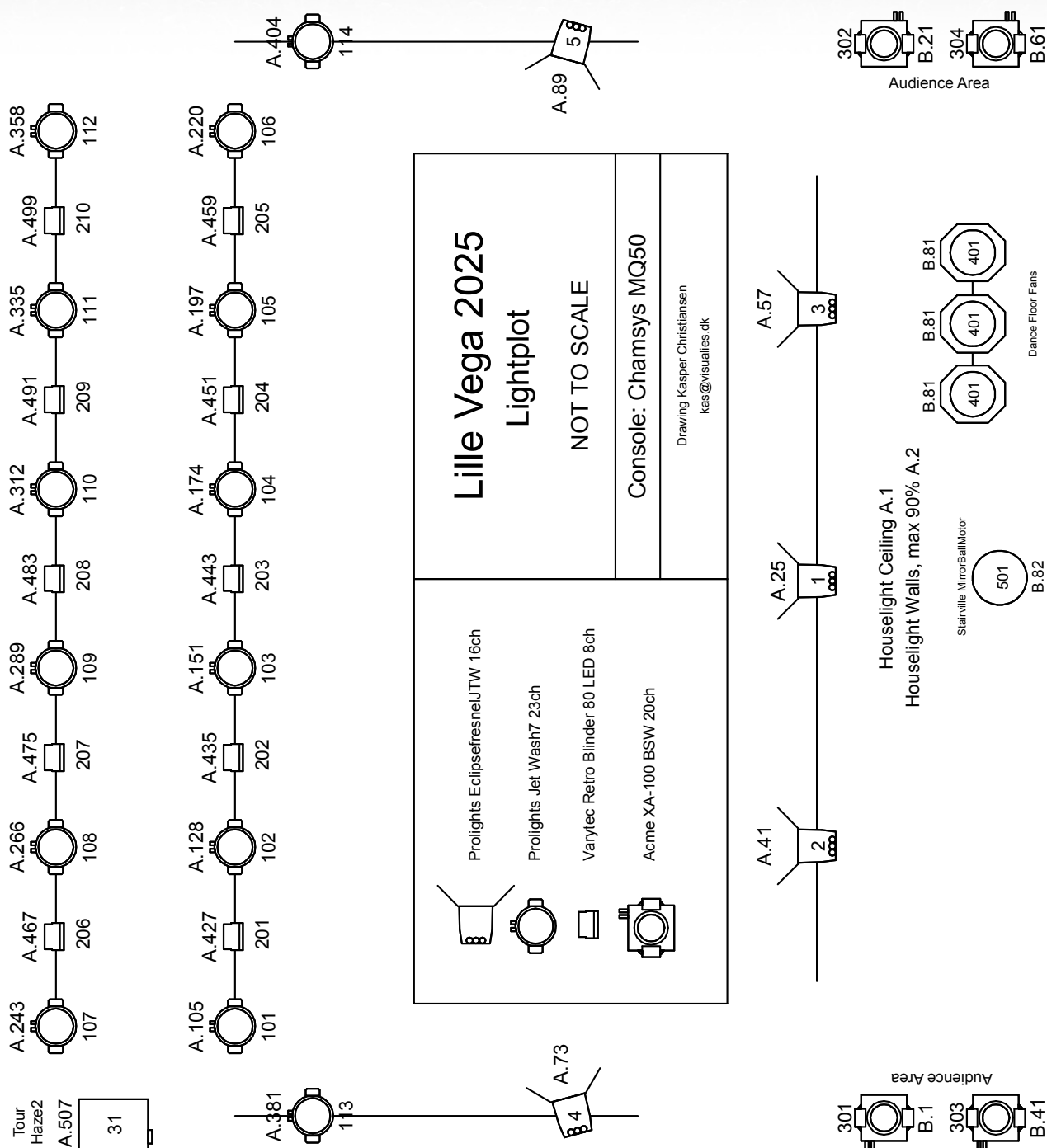
VEGA has chosen to use Blackmagic preview screens to lighten the workflow. We offer these to control logo, black screens, which can be previewed from both the stage and FOH. We offer SDI and HDMI from both positions.

2 x Blackmagic Video Assist 7" 3G

1 x Blackmagic Atem SDI Pro ISO

### **Lighting:** (see light plot at next page)

A total of 14 x LED wash movers, 10 x LED Retro Blinders, 5 x LED Fresnels and 4 x LED movers in the audience area.





## LIGHTPATCH

### LILLE VEGA 2025 Light Patch

Unit	Type	Uni	Ch	Position
1	Prolights EclipsefresnelJTW 16ch	1	25	Front Center
2	Prolights EclipsefresnelJTW 16ch	1	41	Front SR
3	Prolights EclipsefresnelJTW 16ch	1	57	Front SL
4	Prolights EclipsefresnelJTW 16ch	1	73	SR Side MS
5	Prolights EclipsefresnelJTW 16ch	1	89	SL Side MS
11	Houselight Ceiling	1	1	House
12	Houselight Wall, max 90%	1	2	House
21	Tour Haze2	1	507	US Floor
101	Prolights Jet Wash7 23ch	1	105	Pipe MS
102	Prolights Jet Wash7 23ch	1	128	Pipe MS
103	Prolights Jet Wash7 23ch	1	151	Pipe MS
104	Prolights Jet Wash7 23ch	1	174	Pipe MS
105	Prolights Jet Wash7 23ch	1	197	Pipe MS
106	Prolights Jet Wash7 23ch	1	220	Pipe MS
107	Prolights Jet Wash7 23ch	1	243	Pipe US
108	Prolights Jet Wash7 23ch	1	266	Pipe US
109	Prolights Jet Wash7 23ch	1	289	Pipe US
110	Prolights Jet Wash7 23ch	1	312	Pipe US
111	Prolights Jet Wash7 23ch	1	335	Pipe US
112	Prolights Jet Wash7 23ch	1	358	Pipe US
113	Prolights Jet Wash7 23ch	1	381	SR Side MS
114	Prolights Jet Wash7 23ch	1	404	SL Side MS
201	Varytec Retro Blinder 80 LED 8ch	1	427	Pipe MS
202	Varytec Retro Blinder 80 LED 8ch	1	435	Pipe MS
203	Varytec Retro Blinder 80 LED 8ch	1	443	Pipe MS
204	Varytec Retro Blinder 80 LED 8ch	1	451	Pipe MS
205	Varytec Retro Blinder 80 LED 8ch	1	459	Pipe MS
206	Varytec Retro Blinder 80 LED 8ch	1	467	Pipe US
207	Varytec Retro Blinder 80 LED 8ch	1	475	Pipe US
208	Varytec Retro Blinder 80 LED 8ch	1	483	Pipe US
209	Varytec Retro Blinder 80 LED 8ch	1	491	Pipe US
210	Varytec Retro Blinder 80 LED 8ch	1	499	Pipe US
301	Acme XA-100 BSW 20ch	2	1	House Left
302	Acme XA-100 BSW 20ch	2	21	House Right
303	Acme XA-100 BSW 20ch	2	41	House Left
304	Acme XA-100 BSW 20ch	2	61	House Right
401	Dance Floor Fans 1ch	2	81	House
501	Stairville MirrorBallMotor 1ch	2	82	House
1001	MagicHD mediaserver 8 Lav.Out.Txt	5	1	FOH

All controlled by DMX. House console Chamsys MQ50.

design, plot and patch

kasper christiansen

+45 20 41 99 66

[kas@visualies.dk](mailto:kas@visualies.dk)

VEGA

## MAP

